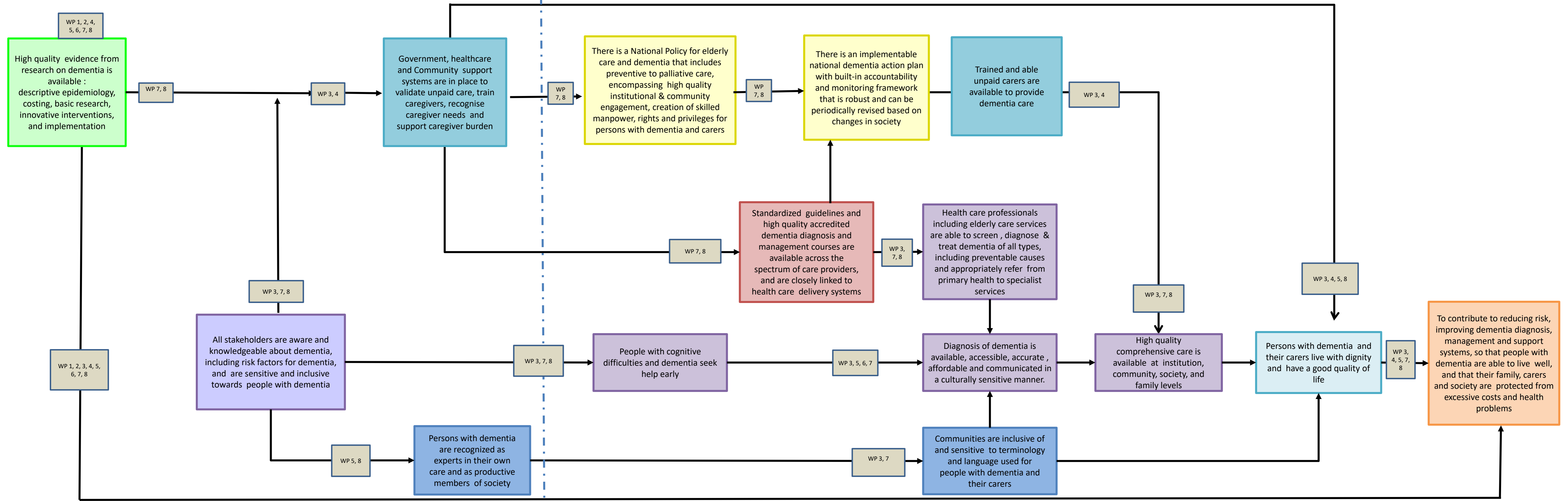


STRiDE India Theory of Change



Legend

- National policy and programs
- Awareness
- Inclusiveness and language
- Diagnosis and management
- Training
- Unpaid care
- Primary outcome
- Impact

STRiDE work packages

- WP 1: Co-development of research and training agenda (ToC)
- WP 2: Research training
- WP 3: Increasing dementia awareness and knowledge, reducing stigma
- WP 4: The costs and other impacts of providing unpaid family care
- WP 5: Generating quantitative evidence on the impact and costs of dementia on individuals and their families and the instruments to collect these data
- WP 6: Making research evidence accessible
- WP 7: Using cost of dementia studies and simulation modelling to inform dementia policy
- WP 8: Recommendations to support the implementation of national dementia plans
- WP 9: STRiDE Management
- WP 10: Communication and knowledge exchange

Assumptions

- A. Every citizen treats persons with dementia and carers with dignity
- B. Society is "for" dementia, "to" dementia, and 'by' dementia
- C. Priorities of persons with dementia and caregivers are assured
- D. Allocation of adequate resources specific to dementia
- E. Dementia getting accepted as a priority by national policies for care
- F. Dementia is a national priority for research by all funding organisations
- G. Diagnosis, management and training
- H. Dementia services are available, affordable, accessible for one and all (Dementia care is free of cost in India)
- I. Inequities would be addressed as and when identified
- J. There would be a sensitive family, society and government regarding dementia care
- K. Availability of committed and adequate personnel for training and service providing
- L. Government and society is strongly supportive of family support systems



Assumptions

Inclusiveness

1. Every citizen treats persons with dementia and carers with dignity
2. Society is “for” dementia, “to” dementia, and ‘by ‘dementia
3. Priorities of persons with dementia and caregivers are assured

Policy

1. Allocation of adequate resources specific to dementia
2. Dementia getting accepted as a priority by national policies for care

Research

1. Dementia is a national priority for research by all funding organisations

Diagnosis, management and training

1. Dementia services are available, affordable, accessible for one and all (Dementia care is free of cost in India)
2. Inequities would be addressed as and when identified
3. There would be a sensitive family, society and government regarding dementia care
4. Availability of committed and adequate personnel for training and service providing

Unpaid carer support

1. Government and society is strongly supportive of family support systems